

The Residences at

WEST SIDE PLACE

by Far East Consortium



*“The ultimate of being successful is the luxury of giving
yourself the time to do what you want to do.”*

- Leontyne Price





THE MELBOURNE SKYLINE

Located in the heart of the CBD on the corner of Spencer and Lonsdale streets, West Side Place is the epitome of indulgent living. Boasting four striking towers, the tallest extending to 81 floors, this luxury development offers stunning one, two and three bedroom residences with expansive views across the bay and cityscape.

Anchored by the proposed Ritz-Carlton hotel – the top premium hotel brand in the world – West Side Place is truly synonymous with luxury. Inspired by the hotel's exceptional amenity offerings, residents can expect high-quality residential facilities including pools, gymnasiums, lounges, dining rooms, kitchens, club lounge, karaoke and mahjong rooms, cinema, virtual golf, library, function rooms and more.

With a new central laneway connecting Lonsdale and Little Lonsdale streets, residents and passers-by can enjoy an extensive network of garden and leisure spaces as part of the 475sqm of parks and open spaces available on the ground floor of this precinct.

Upon completion West Side Place will host two new arcades, with over 1500sqm of ground floor retail space in Stage 1 anticipated to offer a selection of specialty retail, food & beverage, and service offerings to complement the existing retail network across the road.

artist's impression

Designed by renowned architects Cottee Parker, the towers of West Side Place reach new heights in providing breathtaking vistas of the varied landscapes that surround this inner-city precinct including Port Phillip Bay and waterfront destination Docklands.

The striking glass façade is gently angled, adopting a unique folding and terracing nature to create a contemporary and sophisticated texture that weaves throughout the tower exterior. Soft honey tones are also used to highlight its architectural features and accent break areas.

Each tower is composed of a six-sided floorplate, allowing for maximum solar exposure to residences. Its faceting form enhances the three-dimensional and sculptural nature of the project whilst inviting a visual and physical engagement from multiple viewpoints. West Side Place will be a true icon of the Melbourne CBD landscape.



artist's impression

THE RITZ - CARLTON

*Your one chance at truly world-class inner city living.
Be part of this exciting venture, with the proposed
Ritz-Carlton hotel at West Side Place as its centrepiece.*



THE RITZ-CARLTON

The world's most prestigious hotel

West Side Place embodies a new height of luxury inner city living, anchored by the proposed Ritz-Carlton hotel – the top luxury hotel brand in the world.

After an absence of over a decade, Melbourne and West Side Place are proud to be part of the return of this global hotel to Australian shores. With a company philosophy committed to inspiring life's most meaningful journeys in the most desirable destinations on earth, it's clear to see why it is the perfect match for West Side Place right here in Melbourne.

Sitting proudly as the centrepiece of this unique CBD precinct, the proposed Ritz-Carlton hotel will offer guests a new experience in luxury accommodation to Melbourne, attracting visitors from across the globe.

Destined to be an attraction in its own right, the proposed Ritz-Carlton hotel at West Side Place will set an impressive new record as the tallest hotel in Australia, complete with a sky check-in on level 79.



artist's impression



The Ritz-Carlton Hotel Company, L.L.C. or its affiliates ("RITZ-CARLTON") have entered into an agreement with the developer, MAY21 Pty Ltd, a subsidiary of Far East Consortium, to manage the proposed hotel, The RITZ-CARLTON, Melbourne. This agreement may be terminated in certain circumstances such as default and in which case, the hotel will no longer be a RITZ-CARLTON branded hotel. The West Side Place apartments are not owned, developed, marketed, sold, managed or serviced by RITZ-CARLTON.



THE RITZ-CARLTON

A new height of luxury

The proposed Ritz-Carlton hotel at West Side Place will feature 263 luxury hotel suites with quality finishes and furniture including state-of-the-art bathrooms, luxurious amenities and breathtaking views.

Upon arrival, guests will enter the hotel lobby via the porte-cochere and take a direct elevator straight to the hotel's sky check-in on level 79, offering panoramic views across Melbourne's CBD and beyond. Occupying the top 17 floors of an 81-storey tower, the hotel will offer guests access to a range of amenities designed to truly enhance their travel experience, including:

- Day spa
- Restaurants and bars
- Concierge services
- Function rooms
- Business centre
- 500-seat grand ballroom
- Outdoor garden terrace



artist's impression

Ritz-Carlton hotel suite



artist's impression

Ritz-Carlton hotel ensuite



artist's impression



artist's impression



Queen Victoria Market

Haileybury College

University of Melbourne

Flegstaff Gardens

RMIT University

Melbourne Central



Chinatown

Etihad Stadium

Bourke Street Mall

Collins Street

Southern Cross Station

Melbourne Cricket Ground

Southbank

Crown Casino

LOCAL ATTRACTIONS

SHOPPING & RETAIL

01 : COLLINS STREET PRECINCT

- Distance from WSP: 2km
- Luxury fashion brands
- Flagship stores for Louis Vuitton, Prada, Hermès, Tiffany & Co and more

02 : EMPORIUM

- Distance from WSP: 1km
- 200+ retailers of fashion, food & art
- Local and international designers

03 : BOURKE STREET MALL

- Distance from WSP: 1.2km
- Features largest retail store in the Southern Hemisphere
- Fashion, cosmetics, jewellery, homewares and more

04 : SPENCER OUTLET CENTRE

- Distance to WSP: 100m
- Fashion, footwear and specialty brands
- Convenience and service stores

05 : MELBOURNE CENTRAL

- Distance from WSP: 1.2km
- Over 300 stores across 5 levels
- Includes HOYTS LUXE cinema

06 : QUEEN VICTORIA MARKET

- Distance from WSP: 1.1km
- Iconic mecca of fresh food and gourmet produce
- Clothing, jewellery and handcraft stalls

DINING & ENTERTAINMENT

07 : CROWN CASINO

- Distance from WSP: 1.2km
- Features casino, entertainment venues, bars & clubs
- Riverfront dining & luxury fashion brands

08 : CHINA TOWN

- Distance from WSP: 1.6km
- Famous stretch of asian cuisine
- Features cocktail bars, karaoke and retail

SPORTS STADIUMS

09 : ETIHAD STADIUM

- Distance from WSP: 900m
- Home to major sporting events and concerts
- Located within waterside dining precinct

EDUCATION

10 : HAILEYBURY COLLEGE, CITY

- Distance from WSP: 500m
- Private School from Early Learning Centre to Year 12
- Custom built, state-of-the-art science facilities

11 : UNIVERSITY OF MELBOURNE, PARKVILLE

- Distance from WSP: 2.2km
- Internationally regarded university, ranked 5th in the world
- Range of undergraduate and post-graduate courses available

12 : RMIT UNIVERSITY, MELBOURNE

- Distance from WSP: 1.8km
- Technology, design and enterprise courses
- Vocational, undergraduate and postgraduate courses available

PARKS & RECREATION

13 : FLAGSTAFF GARDENS

- Distance from WSP: 450m
- Spans 18 acres with mature trees and lawn areas
- Walking tracks and sculptures

14 : ROYAL BOTANIC GARDENS

- Distance from WSP: 3km
- 94 acres featuring native and exotic vegetation
- Walking tracks, lakes and dining onsite

PUBLIC TRANSPORT

15 : SOUTHERN CROSS STATION

- Distance from WSP: 400m
- Major CBD train station
- Access to CBD, outer suburbs and regional areas

16 : FLINDERS STREET STATION

- Distance from WSP: 1.8km
- Services entire Metropolitan rail network
- Iconic Melbourne Clock-Tower building

17 : PARLIAMENT STATION

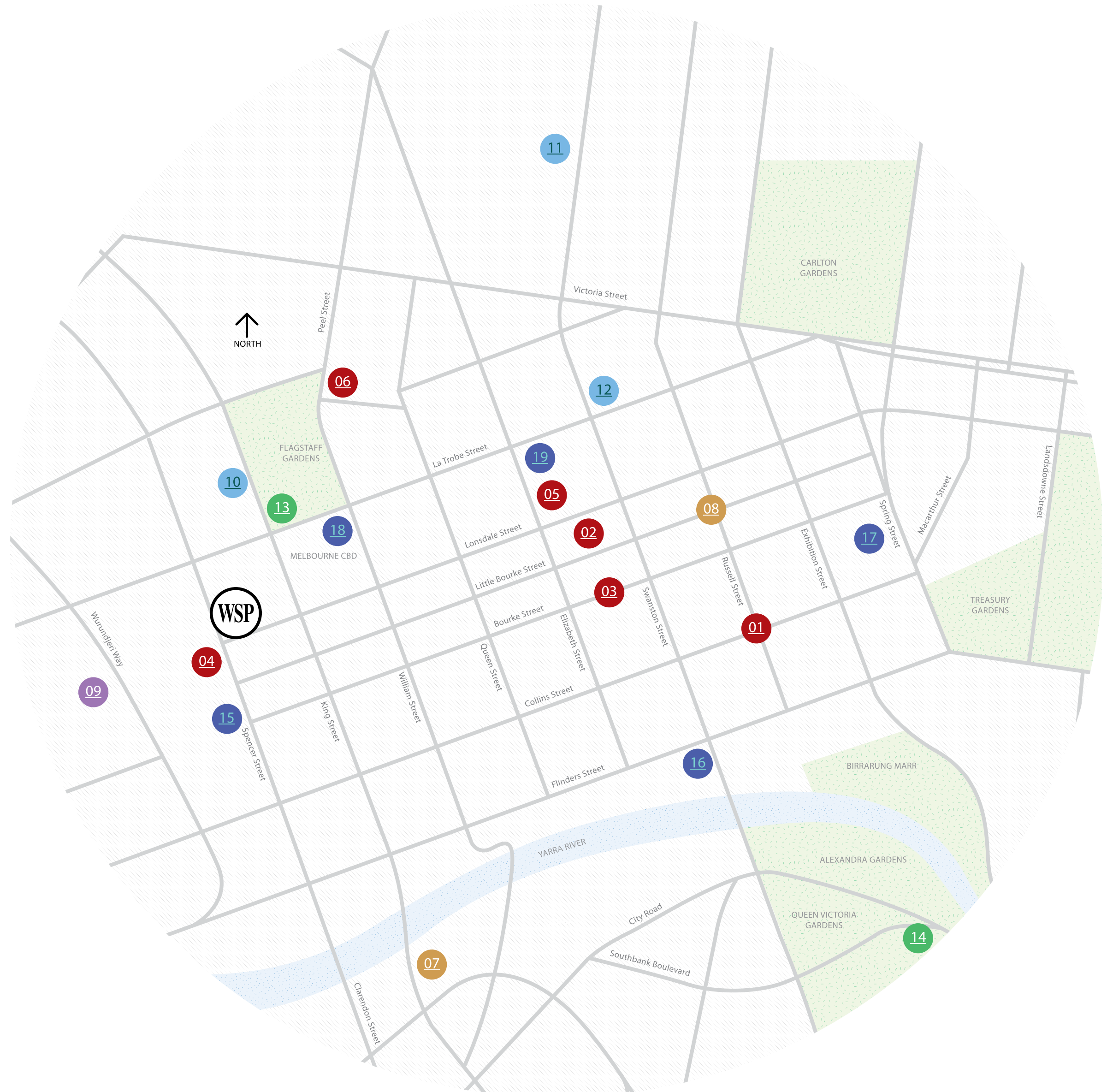
- Distance from WSP: 2.3km
- Located near luxury fashion district
- Opposite Parliament House

18 : FLAGSTAFF STATION

- Distance from WSP: 600m
- Services the north eastern CBD area
- Opposite scenic Flagstaff Gardens

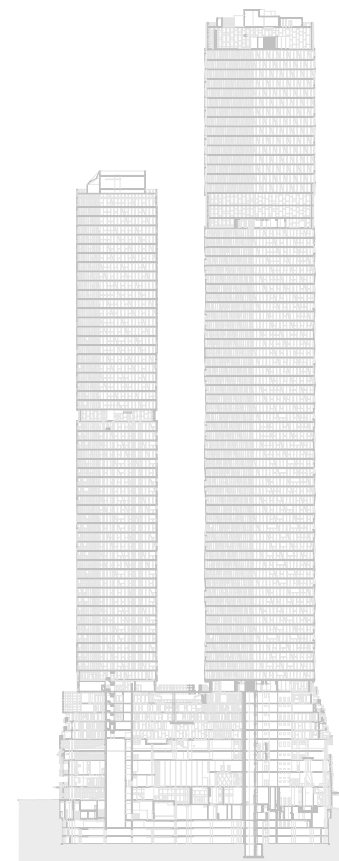
19 : MELBOURNE CENTRAL STATION

- Distance from WSP: 1.2km
- Located beneath Melbourne Central Shopping Centre
- Nearby State Library and RMIT University





*MELBOURNE, THE WORLD'S
MOST LIVEABLE CITY*



THE RESIDENCES AT WEST SIDE PLACE

Located in the heart of Melbourne's CBD, West Side Place offers buyers a range of living options to suit any lifestyle spanning across 1, 2 and 3 bedroom residences.

The residences are split across 3 key levels and offerings:

Garden Residences

- Tower A: Levels 1-10
- Tower B: Levels 1-10

These apartments are located in the Podium and feature terraces overlooking the western and eastern open garden terraces. Access to all Level 6, 7 and 10 residential amenities.

Central Residences

- Tower A: Levels 12-35
- Tower B: Levels 12-38

Access to all Level 6, 7 and 10 residential amenities.

Sky Residences

- Tower A: Levels 36-60
- Tower B: Levels 39-63

Access to all Level 6, 7 and 10 residential amenities, and exclusive access to additional Level 11 residential amenities.

Fitted out with multiple levels of residential amenities, there is something for everyone – whether you wish to enjoy some quiet time in the reading room, swim a few laps in the pool, entertain friends and family in the living and dining rooms, or enjoy a drink in front of an open fire or in one of the open garden terraces, it's all at West Side Place.

Level 6, 7 and 10 residential amenities

Accessible by all residents – Garden, Central and Sky Residences

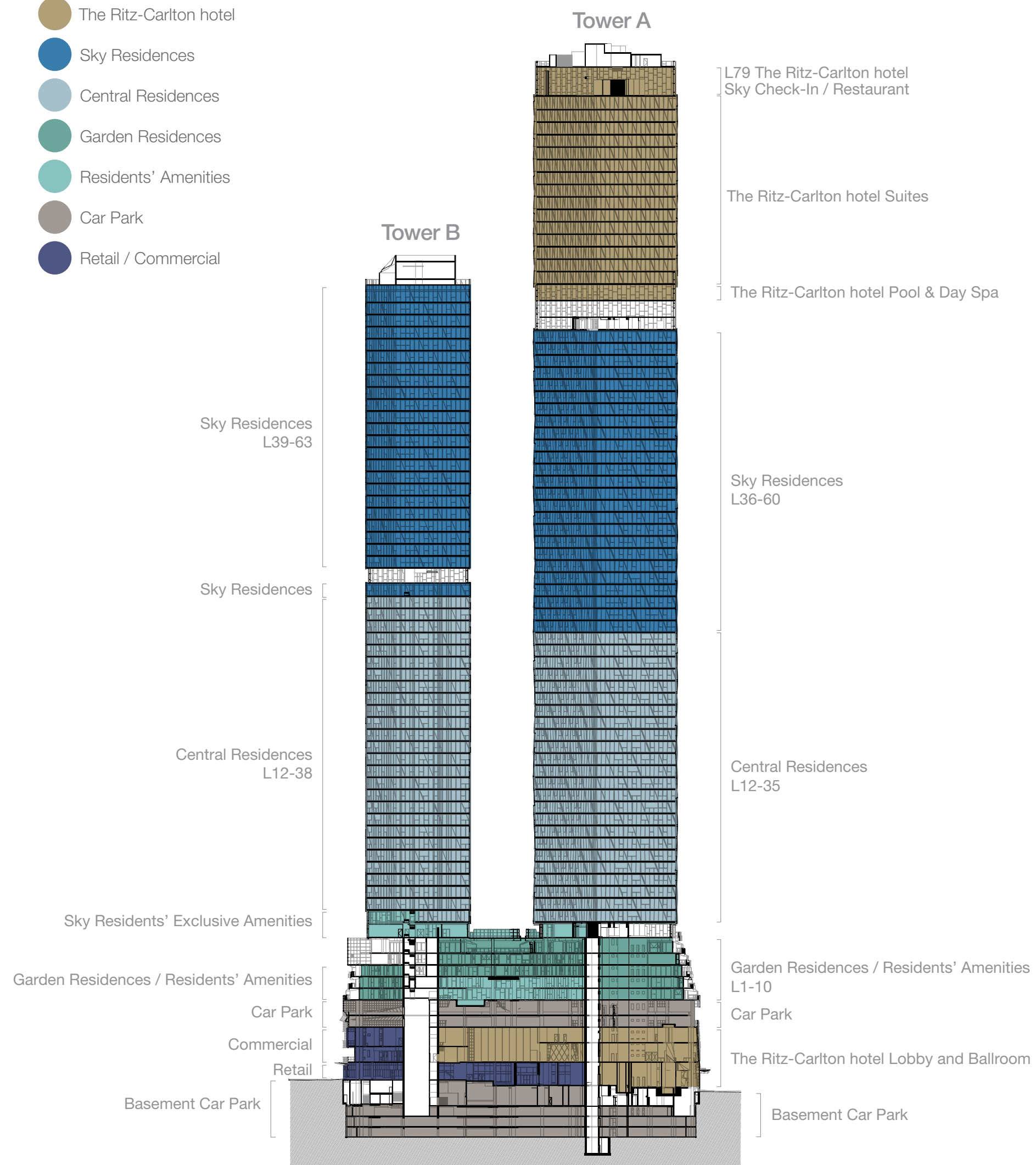
- over 400sqm residential lounge with garden views
- pool with steam room and sauna
- gymnasium with open terrace
- function, meeting and reading rooms
- 2 x large open terraces with seating & BBQ facilities
- private cinema with luxury armchairs
- karaoke and virtual golf facilities
- private dining and living areas

Level 11 residential amenities

Exclusive access to Sky Residences only

- pool with steam room and sauna
- gymnasium and wellness centre with yoga and pilates equipment
- outdoor rooftop terrace with BBQ facilities
- private dining and lounge areas with fireplace
- mahjong room

- The Ritz-Carlton hotel
- Sky Residences
- Central Residences
- Garden Residences
- Residents' Amenities
- Car Park
- Retail / Commercial



*PUBLIC RETAIL
PRECINCT AND GARDENS*





artist's impression

Public Amenities: Retail Precinct

West Side Place will feature an extensive network of ground-floor retail amenity, adding to the existing network of buzzing laneways currently in this area and retail offering across the road. With Stage 1 spanning over 1500sqm and introducing

one new arcade, residents can enjoy the convenience of on-site access to a range of food & beverage, retail and service offerings right at their front door.



artist's impression

Public Amenities: Communal Garden & Leisure Areas

West Side Place will provide an extensive network of public gardens and leisure space on the ground floor. Featuring a central laneway connecting Lonsdale St and Little Lonsdale St, lush gardens, park and rich plant-life weave throughout paved pathways taking you through the centre of the precinct.

These public gardens also feature outdoor seating and sculptural artwork pieces to provide a perfect balance of serenity and style right at home, complete with WiFi access throughout all communal spaces.



artist's impression

Environmental Initiatives

West Side Place is targeting a 5 star Green Star (as built) rating, which is deemed equivalent to Australian Excellence within the built environment. Far East Consortium's intended sustainability strategy to achieve this rating will see the following key attributes included within the development:

- Energy efficient lighting.
- Energy efficient double glazing to reduce heating energy consumption.
- Energy efficient air-conditioning strategy, involving a central plant expected to permit significant energy savings to all residents.
- An embedded network allowing residents to purchase utilities (electricity, gas and water) at reduced rates from a single on-site retailer.
- Water efficient fixtures and fittings selected to minimise water consumption.
- Water efficient filtration for the pools.
- Share car facilities.

- A shutdown switch next to the apartment entry door which allows occupants to turn off all lighting and air conditioning from a single point before they leave.
- Rainwater storage tanks to provide recycled water for irrigation and reduce potable water demand and bills.
- Intention to be electric vehicle (EV) ready upon completion to enable onsite electric car recharging.

Far East Consortium is affirming its commitment to green and environmentally conscious design by incorporating these attributes and believe this move will set a new benchmark for green living in Melbourne's CBD.



*SPACES TO RELAX,
ENTERTAIN AND ENJOY*

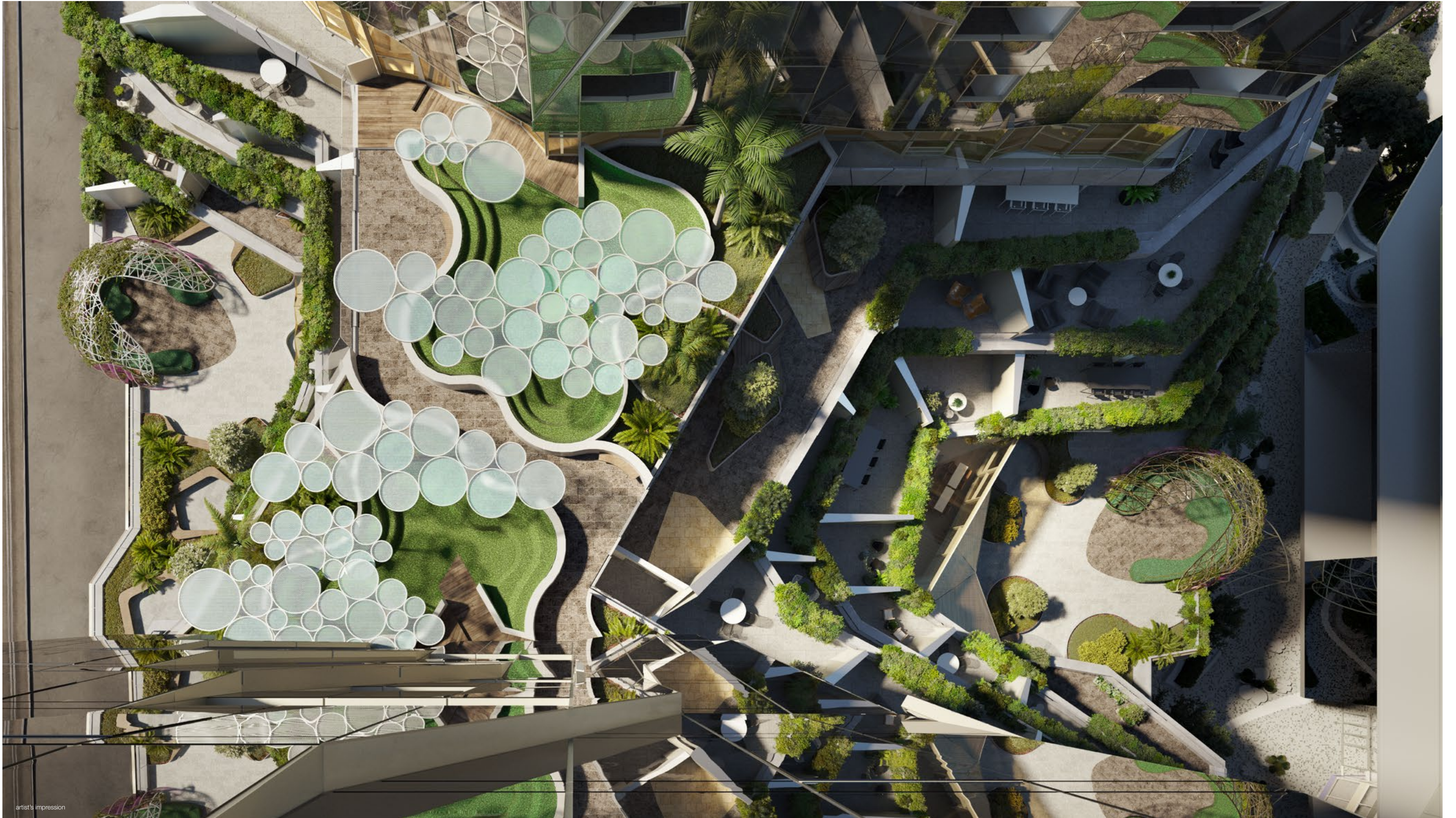
L.6 RESIDENTS' AMENITIES: SKY GARDENS & OPEN TERRACES

Level 6 boasts 2 large open terraces accessible to all residents at West Side Place, providing a sense of escape and tranquillity in the heart of urban living.

The eastern terrace has a rainforest-inspired design, whilst the western terrace pulls from desert-inspired landscapes. Both terraces play host to individual water features, enhancing the sense of relaxation and ease, and large enclosed cubby-like seating, BBQ facilities and outdoor dining areas.



artist's impression



artist's impression



artist's impression

L.6 RESIDENTS' AMENITIES: LOUNGE & FUNCTION ROOMS

Comprising a spectacular double height ceiling space, the Level 6 residential lounge offers over 400sqm of leisure area available to all residents. Complete with breakout spaces, open fireplaces and secluded study areas, it provides direct views and access to both terraces on the same level. A feature staircase allows residents direct access to additional amenities located on Level 7.

A large open plan kitchen perfect for preparing meals or hosting cooking demonstrations is located directly adjacent to the lounge.

Extending past the residential lounge takes you through to two flexible function room spaces, available to be used individually or combined for a larger area. Both rooms provide direct access to the eastern terrace and specialised catering kitchen facilities.



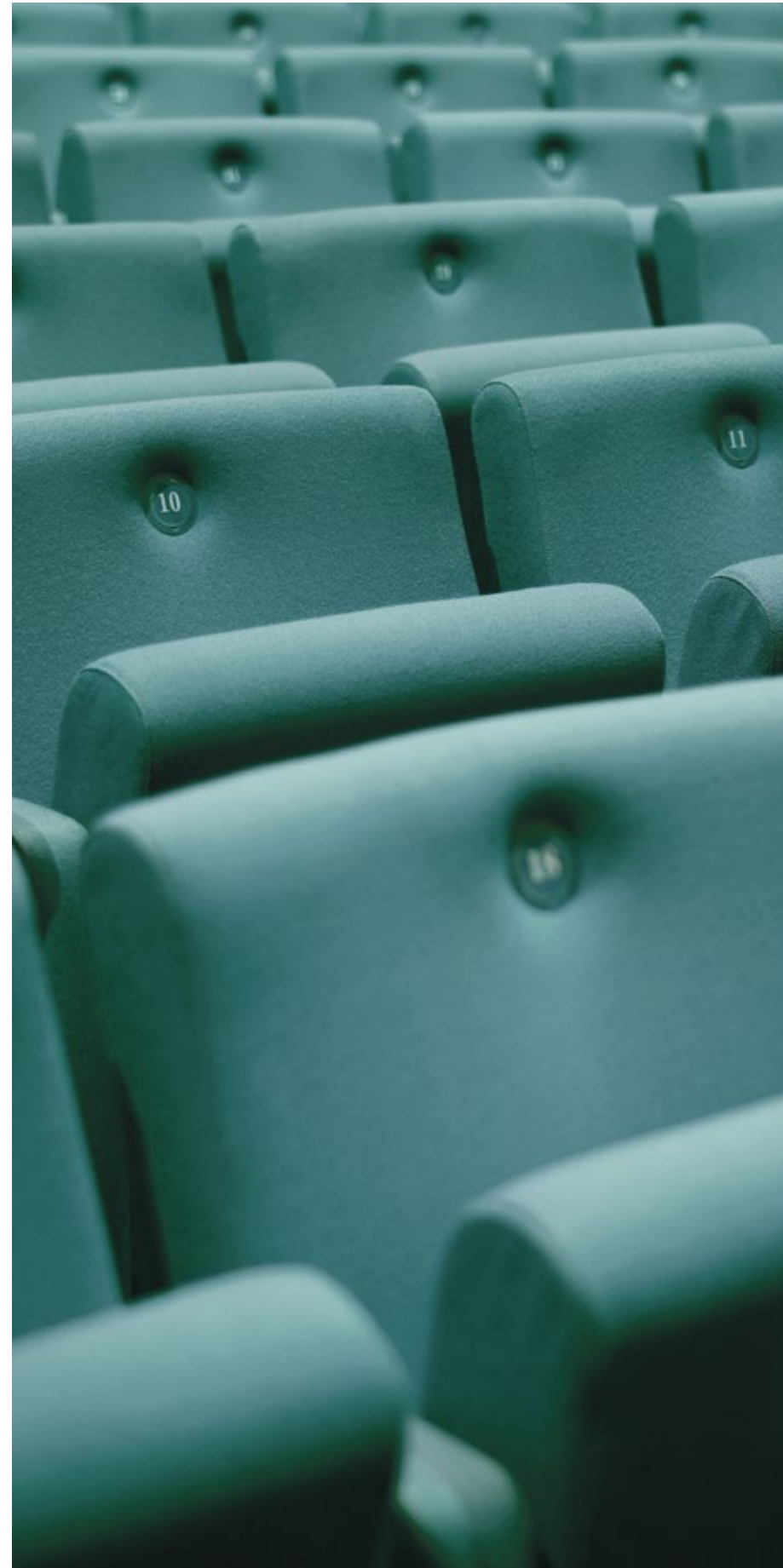
L.6 RESIDENTS' AMENITIES: CINEMA, KARAOKE, VIRTUAL GOLF

Level 6 also offers all West Side Place residents access to a range of entertainment amenities.

A private cinema featuring luxury armchairs creates the perfect space to enjoy a favourite film or television show with friends, complete with a high definition projector and surround sound stereo system.

The karaoke room with luxury fitouts and facilities allows residents to let their hair down and have fun with friends after a long day. The room features karaoke machine with large LED screen, surround sound stereo system, festive lighting and luxury couches for audiences to relax and be entertained.

Offering a full 18-hole simulation of classic golf courses from around the world, the virtual golf facilities at West Side Place utilise state-of-the-art technology. A perfect opportunity to improve your swing and playing strategies, it also features data-storing to assist with performance tracking.



L.6 RESIDENTS' AMENITIES: POOL & GYMNASIUM

Accessible by all residents, Level 6 features a stunning pool set amongst double height ceilings with direct views to the western terrace to create a true sense of space and escapism. It also provides direct access to change rooms, steam room and sauna.

Featuring the most advanced cardio equipment and a wide range of weight-lifting facilities, this gymnasium also offers residents the opportunity to exercise outdoors with direct access to a large undercover fitness terrace. Complete with mirrored walls, yoga mats, lockers and store room, it is the perfect space to workout at any time of day or night.

L.7 RESIDENTS' AMENITIES: PRIVATE DINING & LIVING, READING & MEETING ROOMS

Designed for entertaining friends in a luxurious environment with high-spec finishes, the private dining and living facilities on Level 7 at West Side Place can be booked as individual rooms or together as one larger open space. Both rooms adjoin a kitchen and enjoy direct access to a private terrace complete with BBQ facilities, perfect for outdoor entertaining in the warmer months. For some secluded private time, the reading room provides an intimate area to unwind at the end of a long day, coupled with access to a private western facing terrace. Fitted with private study area, desks and chairs, sharing library and wireless internet,

this room provides residents a space to lose themselves in the pages of a favourite novel, embark on a study session, or simply take time out to think, reflect and relax. Available to all residents, 2 generously-sized meeting rooms offer a high-end business experience from the comfort of your own home. Complete with projector facilities, boardroom table and seating up to 10 people, it's the perfect environment for residents to create, grow and connect with other businesses.



L.11 EXCLUSIVE SKY RESIDENTS' AMENITIES: GARDEN LOUNGE & ROOFTOP TERRACE

The garden lounge connects Sky Residents to the rooftop terrace, recreational pool and gymnasium located on Level 11. Indoor seating that connects to an outdoor terrace allows residents to enjoy outdoor living in an internal environment and also features a kitchen and fireplace – the perfect setting for a dinner party. This facility can also be booked for private events.

The podium rooftop terrace provides spectacular views to both the east and west whilst relaxing under a canopy of clouds designed to offer wind and sun protection. Complete with BBQ facilities, seating and dining area, it is also host to an array of lush plant life designed by renowned landscape architects.

Level 11 will also house a mahjong room exclusively for Sky Residents.



artist's impression

L.11 EXCLUSIVE SKY RESIDENTS' AMENITIES: POOL & GYMNASIUM

This heated recreational pool provides the perfect leisure aqua experience in a luxury double-height space, complete with pool, sauna, steam room and change rooms. Offering spectacular views to the west it also provides direct access to the podium rooftop.

The Level 11 gymnasium and wellness centre includes pilates and yoga equipment, providing an ideal space for low impact exercise in a leisurely environment. Both the pool and gymnasium located on Level 11 are available to Sky Residents only.



artist's impression

L.7 EXCLUSIVE AMENITIES: MEMBERS ONLY CLUB LOUNGE

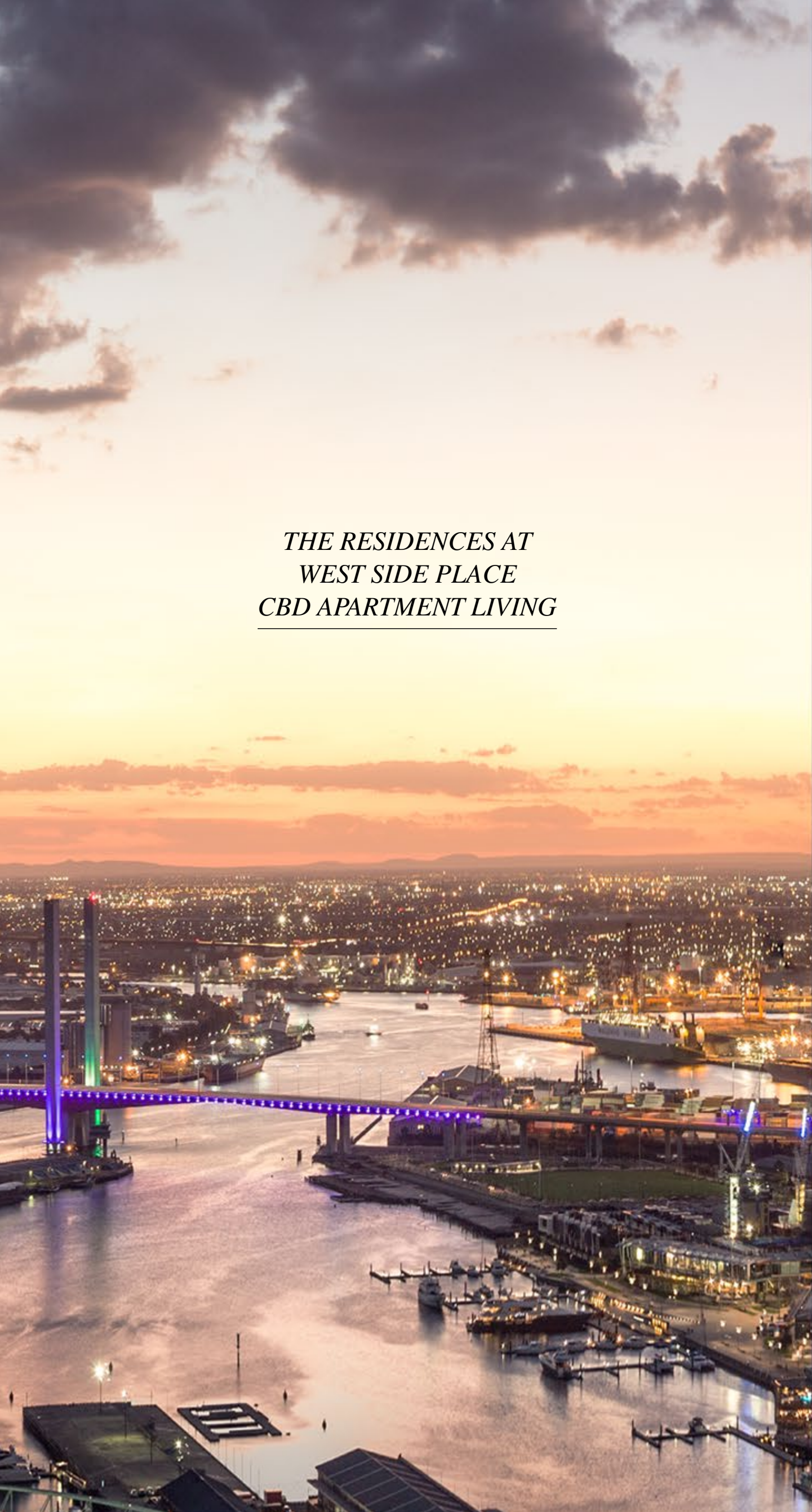
This members only club lounge on Level 7 is a unique experience in luxury and indulgence. Fitted with the highest quality in furnishing and amenity it includes a comprehensive kitchen, bar, cellar, table and informal seating areas with lounges and armchairs.

Featuring expansive views to the west over a private terrace and the Level 6 residents' lounge, this exclusive club lounge is a quiet alternative to the lounge area, providing a private space where one can come to relax, entertain friends, or even enjoy some wine tasting or a chess game.



artist's impression

*THE RESIDENCES AT
WEST SIDE PLACE
CBD APARTMENT LIVING*



THE RESIDENCES

Setting a new benchmark in inner-city apartment living, West Side Place offers a complete range of 1, 2 and 3 bedroom residences. Completed with high-end quality fit-outs, the residences offer expansive views across Port Phillip Bay, CBD cityscape and beyond.

Designed to maximise natural light, residences are available from podium level 1 right up to the clouds at level 63, across the following three offerings:

- **Garden Residences:** Levels 1-10 (Tower A & B)
- **Central Residences:** Levels 12-35 (Tower A), Levels 12-38 (Tower B)
- **Sky Residences:** Levels 36-60 (Tower A), Levels 39-63 (Tower B)

Garden and Sky Residences offer ceramic tiled terraces and balconies respectively, allowing residents to enjoy an outdoor sense of space within the privacy of their home.

With over 4000sqm of residential amenities peppered throughout, all residences will have access to facilities located on Levels 6, 7 and 10 including pool, gymnasium, open garden terraces, lounges, function and meeting rooms, cinema, karaoke room and virtual golf facilities. Sky Residences will also have exclusive access to additional amenities located on Level 11 consisting of pool, gymnasium, sauna, steam room, mahjong room and rooftop terrace.



artist's impression
Sky Residence interior



artist's impression

THE RESIDENCES INTERIORS & FINISHES

Residences at West Side Place are designed with the highest quality interior finishes and fittings, including:

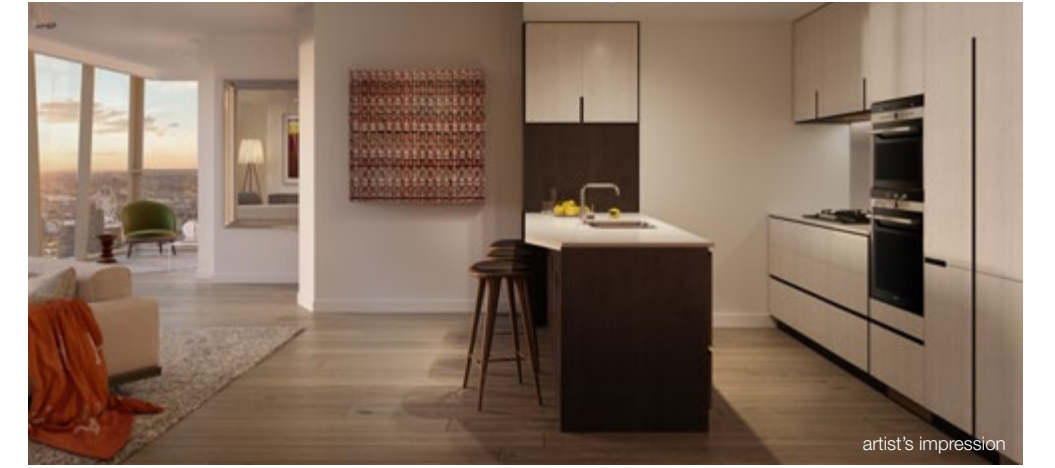
- Engineered timber floors
- Stone kitchen benchtops
- Stone splashbacks
- 100% wool carpets
- Polished chrome fittings
- European appliances

Sky Residences will also have access to additional finishes, including integrated refrigerator/freezer, washer/dryer condenser and track lighting to living spaces.

Purchasers will have the flexibility to customise the final touches on their new residence, with a selection of colour scheme and upgrade options available.

Two colour schemes are offered – Sombre (Dark Scheme) and Spritz (Light Scheme) – each carefully selected to provide a modern and sophisticated design to your new luxury residence.

Garden and Central Residences can choose to upgrade to an integrated refrigerator/freezer and washer/dryer condenser, whilst all residences can upgrade to timber floors throughout bedrooms to match living areas at an additional cost.



artist's impression

Sky Residence kitchen



artist's impression

A woman in a vibrant red, backless, floor-length gown stands on a grand, ornate staircase. The dress has a large, flowing train that cascades down the steps. The staircase is flanked by dark, polished metal railings with decorative finials. The walls are made of dark, textured stone or marble. Two bright, circular spotlights are positioned at the top of the stairs, casting a strong red glow over the scene. In the background, a man in a dark suit is visible, standing near the top of the stairs. The overall atmosphere is dramatic and elegant.

*MELBOURNE CBD LIVING
FASHION & RETAIL*

FASHION & BOUTIQUE SHOPPING

Shopping has been a big part of Melbourne's history since the late 19th century. Today, the city is home to some of Australia's best shopping strips, such as the iconic Chapel Street which stretches many blocks through South Yarra to Windsor, as well as the largest shopping centre in the southern hemisphere, Chadstone Shopping Centre. Melbourne also hosts The Virgin Australia Melbourne Fashion Festival; an annual

celebration of fashion, beauty, business and creative endeavour. Take your fashion to new heights at the Paris end of Collins Street where you can find flagship stores for many luxury brands including Prada, Armani and Tiffany & Co. Or why not explore Melbourne's famous high-end shopping centres including The Emporium and QV.



*MELBOURNE CBD LIVING
PARKS & GARDENS*



GARDENS & PARKLAND

With an abundance of beautiful and lush parks across the city, it's no surprise that Melbourne is known as a green city. Explore a multitude of striking flora and fauna in the famous Royal Botanic Gardens, try your hand at the famous Albert Park golf course or relax in Flagstaff Gardens, just minutes from West Side Place. If you consider yourself a bit of a fitness-buff, why not try rowing or kayaking down the beautiful Yarra River, or discover Melbourne's many cycling and walking tracks across the city.



*MELBOURNE CBD LIVING
INFRASTRUCTURE & EDUCATION*



TRANSPORT & INFRASTRUCTURE

It's incredibly easy and enjoyable to get from A to B in Melbourne. The beautifully designed Southern Cross Station is seconds away from West Side Place, whilst the iconic and extensive tram, train and bus network will connect you anywhere you need to go. Looking to travel abroad? A high-speed train from the CBD to the airport is also planned.



EDUCATIONAL INSTITUTIONS

Melbourne boasts some of the best education facilities in the country. Designed to meet the schooling needs of students living in the CBD, renowned Haileybury College will be opening just seconds away from West Side Place and will follow Haileybury's acclaimed academic program.

Other prestigious high schools in the area include Melbourne High, Melbourne Girls Grammar and Mac.Robertson Girls' High School. Melbourne's best tertiary education is also based in the CBD, including Vic Uni, RMIT University and the esteemed University of Melbourne. World-class health services with leading technology are also nearby including the Royal Children's Hospital and the Royal Melbourne Hospital.



HAILEYBURY



THE UNIVERSITY OF
MELBOURNE



*MELBOURNE CBD LIVING
SPORTS & EVENTS*



STADIUMS & ARENAS

The pinnacle of sporting prowess, Melbourne is regularly recognised as the world's official "Ultimate Sports City". Hosting everything from the renowned Australian Open to the legendary Grand Prix and the iconic Melbourne Cup to much-loved soccer, rugby and AFL, Melbourne is truly the national sporting capital in a country that is often dubbed 'sports crazy.' West Side Place is just a hop, step and jump away from some of Melbourne's world-class sporting arenas including the MCG, Etihad Stadium, Rod Laver Arena, AAMI Park and Flemington Racecourse.

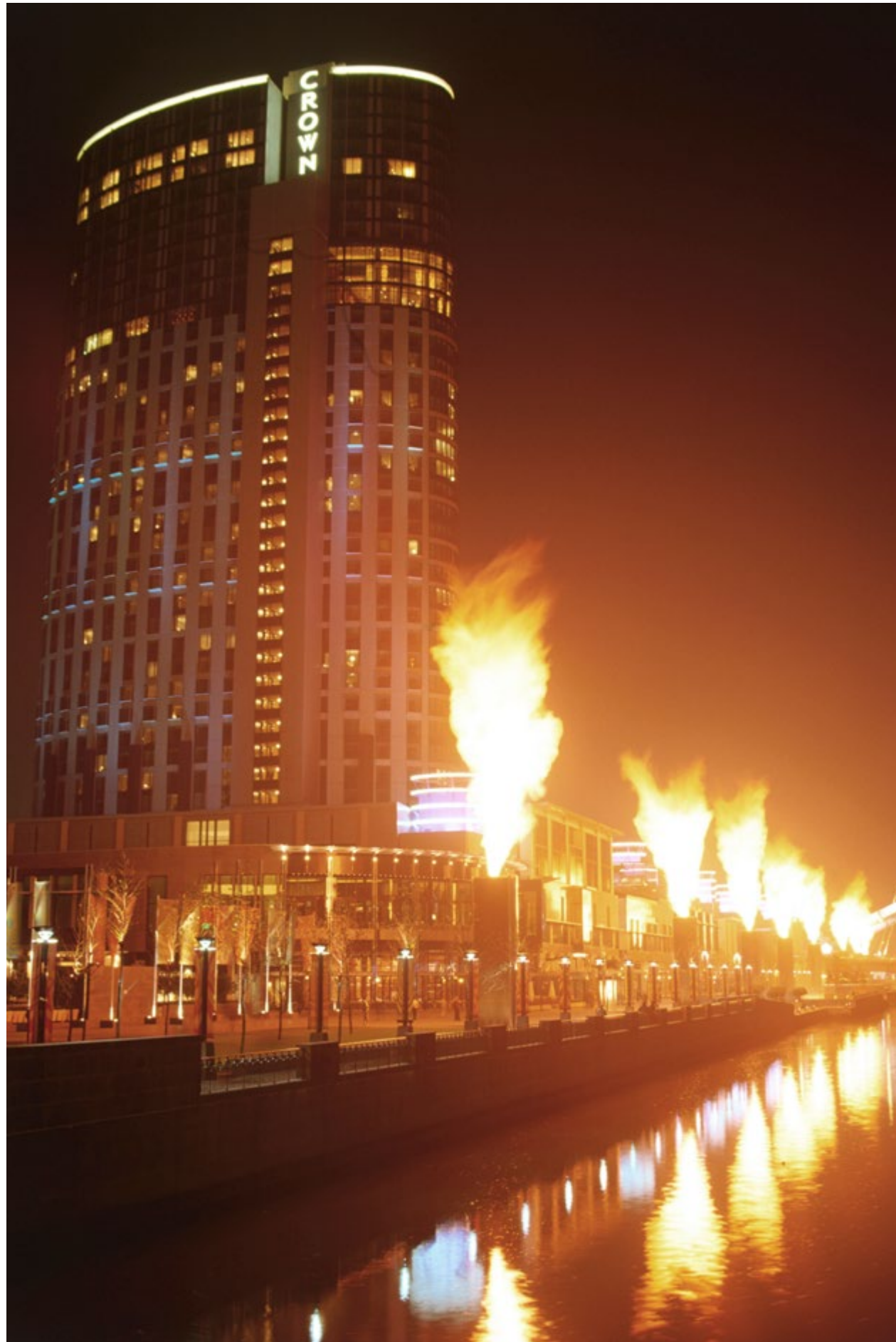


*MELBOURNE CBD LIVING
DINING & NIGHTLIFE*



DINING & NIGHTLIFE

Tourists and locals swarm to Melbourne's city centre night after night for its renowned, buzzing nightlife. Minutes from West Side Place is the iconic Crown Casino. Loved for its hatted restaurants, vibrant bars and excellent shopping, this famed destination is one not to miss. If you're keen to explore the centre of the city, don't miss Melbourne's range of glamorous, karaoke and boutique bars and nightclubs that scale the streets of the CBD.



Crown Casino. 1.2km from WSP



Federation Square. 2km from WSP

*MELBOURNE CBD LIVING
ARTS & CULTURE*



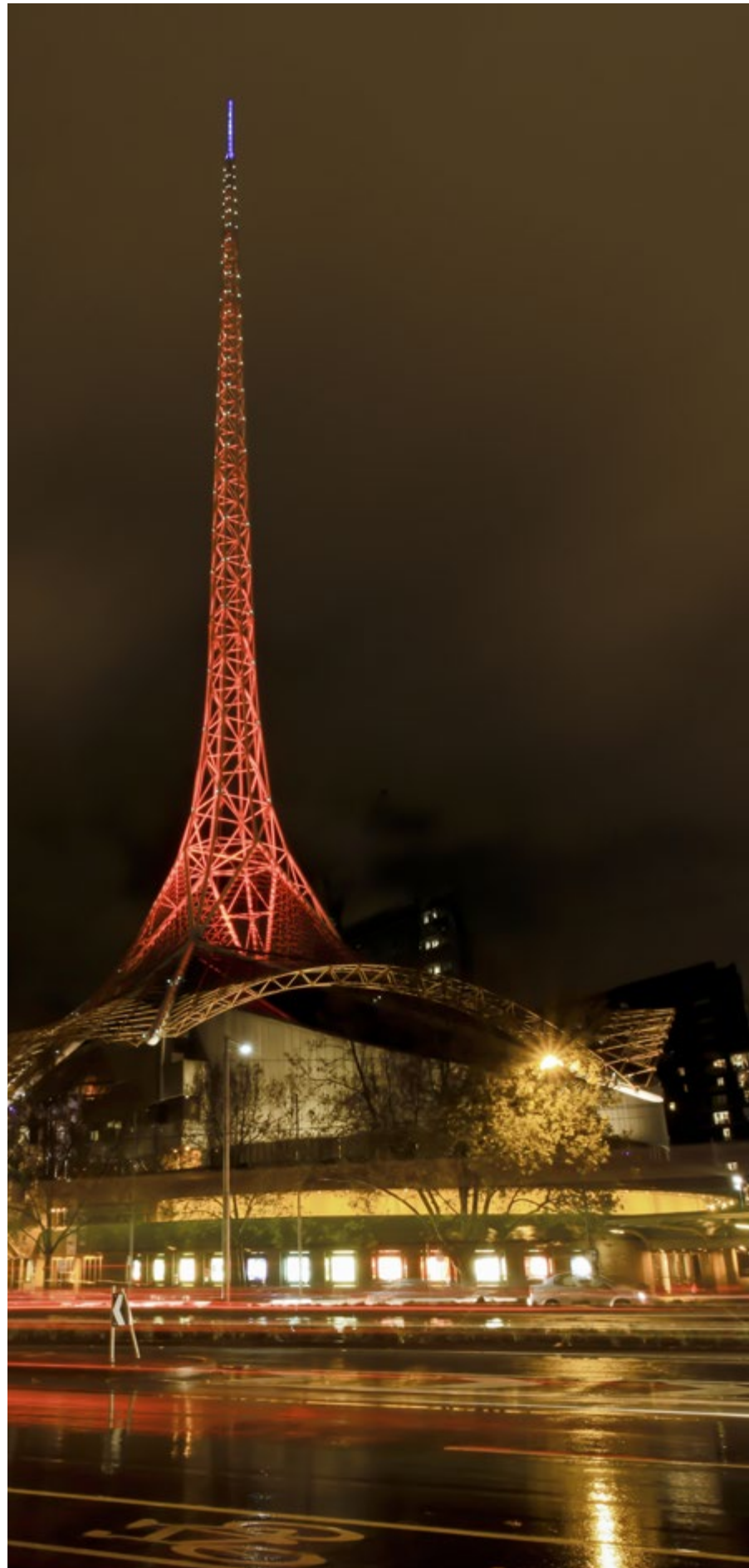
THE ARTS & CULTURE

From leading dance and Broadway musicals to unconventional performances, dozens of stage productions are performed in Melbourne each week. Catch a blockbuster at the height of its success at the beautiful Regent Theatre, head down to one of Melbourne's oldest public institutions, the Melbourne Athenaeum theatre for an evening of opera, relax with an outdoor gig at the iconic Sidney Myer Music Bowl or visit The Art Centre's State Theatre to catch the famous Australian Ballet.

Melbourne is loved for its art, often referred to as the art hub of Australia. The famous NGV is not one to be missed, as well as the many commercial and public galleries scattered throughout the streets

of the city, including the ACCA and ACMI. If you're looking for less commercialised talent, why not explore the street art of Melbourne's hidden laneways or the public paintings and sculptures lining Melbourne's parks.

Awarded the title of UNESCO City of Literature in 2008, Melbourne is an official world literary capital. From famous literary festivals such as the Melbourne Writers' Festival to literary laneways like Flinders Lane to the iconic State Library and City Library – Melbourne is home to some of the world's most famous writers including twice Booker Prize winner Peter Carey and two-times Miles Franklin award winner Alex Miller.



Far East Consortium

FAR EAST CONSORTIUM – THE DEVELOPER

Specialising in property development, hospitality and car parking projects in Mainland China, Hong Kong, Malaysia, Singapore, Australia, New Zealand and the United Kingdom, Far East Consortium International Limited (FEC) is a pioneering regional corporation.

With over forty years of experience operating in Asia Pacific, FEC has been dubbed the region's most celebrated land and property developer. The leading conglomerate's local expertise allows it to develop residences and neighbourhoods that target Asia's rapidly growing and prosperous middle class.

Since commencing operations in Australia in 1994, the group has contributed significantly to Melbourne's skyline through landmark urban renewal redevelopments including Regency Towers, Royal Domain Tower, Northbank Place, Flinders Wharf & Upper West Side equating to over \$2billion of completed projects.

Far East Consortium's national expansion sees an impressive pipeline of projects, in excess of \$7billion, including Queens Wharf in Brisbane, The Towers in Perth, Jupiter's on the Gold Coast and Pymont in Sydney.

From Shanghai's Royal Crest I to Melbourne's Royal Domain Tower to London's upcoming Alpha Square, FEC has developed some of the world's most esteemed residential apartment projects.



COLLIERS INTERNATIONAL

Colliers International is an industry leading global real estate company and provides a full range of real estate services to property owners, investors, developers and occupiers.

Colliers International is consistently ranked by the International Association of Outsourcing Professionals among The Global Outsourcing 100 top businesses and the World's Best Outsourcing Advisors.

Here in Melbourne, Colliers International is a market leader in off the plan apartment sales and has sold over \$5.5billion of property over the past 24 months.

Our experience and expertise in setting, launching and selling out residential property projects from the largest multi staged mixed use developments right down to the boutique that require their own special expertise, is unparalleled.



COTTEE PARKER – ARCHITECT

Cottee Parker Architects operates in Melbourne, Perth and Brisbane. The practise has extensive experience in delivering unique and considered design solutions for the built environment. With over 25 years of operation the practise has established firm relationships with local planning authorities and is well recognised for its exceptional urban design outcomes. This has enabled Cottee Parker to achieve design solutions for clients well beyond the usual planning constraints.

Cottee Parker Architects is one of Australia's leading urban design, architectural, and interior design firms.



KPDO – INTERIOR DESIGN

Kerry Phelan Design Office was established in 2010 and has quickly garnered a reputation for stunning luxury residential and commercial interiors. KPDO is known for its unique detailing, attention to materiality, fabrics, atmospheric lighting, precise furniture selection and knowledge of contemporary art. Planning is carefully considered, honed and crafted to create a seamless sense of movement and integrated design. KPDO is a 21st century avant-garde design practice operating in Melbourne, Hong Kong and New York. KPDO's work splashes the world's design magazines and is a favourite of top photographers and the glitterati.



RUSHWRIGHT ASSOCIATES – LANDSCAPE ARCHITECTS

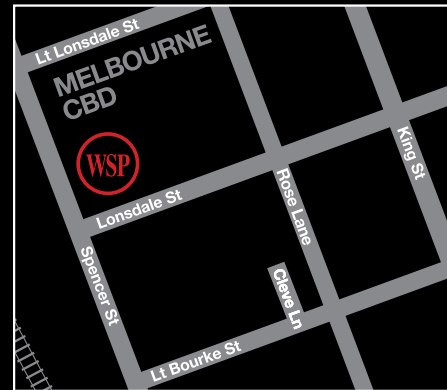
rushwright associates is an award winning design practice based in Melbourne, Australia, offering consultancy services in landscape architecture, urban design and constructed ecology. Bringing together the extensive experience and design expertise of its Directors Catherine Rush and Michael Wright, the company has built its reputation on innovative design outcomes and the exploration of biodiverse planting designs for city places.

The company has extensive experience working with private and public sector client authorities, as well as Federal, State, and Local Government bodies in the design evolution and delivery of landscape and urban design projects at the complete range of scales. Their work internationally includes collaborations with offices in the United States, United Kingdom, New Zealand, the United Arab Emirates, Vietnam, Laos and China. Key projects include Melbourne's Shrine of Remembrance, Queens Place Melbourne, and the new Victorian Comprehensive Cancer Centre roof gardens in Parkville.

The Residences at

WEST SIDE PLACE

by Far East Consortium



Presented by

Far East Consortium



Display Suite: 250 Spencer Street,
Melbourne VIC 3000
Entrance via Lonsdale St.
Free Parking Available On Site.

www.westsideplace.com.au

The Ritz-Carlton Hotel Company, L.L.C. or its affiliates ("RITZ-CARLTON") have entered into an agreement with the developer, MAY21 Pty Ltd, a subsidiary of Far East Consortium, to manage the proposed hotel, The RITZ-CARLTON, Melbourne. This agreement may be terminated in certain circumstances such as default and in which case, the hotel will no longer be a RITZ-CARLTON branded hotel. The West Side Place apartments are not owned, developed, marketed, sold, managed or serviced by RITZ-CARLTON.

